

SSI/SSDI Outreach, Access, and Recovery (SOAR): Pennsylvania Balance of State Continuum of Care Presentation

Substance Abuse and Mental Health Services Administration
(SAMHSA) SOAR Technical Assistance Center
Policy Research Associates, Inc.

September 2023



1

Disclaimer

The views, opinions, and content expressed in this presentation do not necessarily reflect the views, opinions, or policies of the Center for Mental Health Services (CMHS), the Substance Abuse and Mental Health Services Administration (SAMHSA), or the U.S. Department of Health and Human Services (HHS).

2



2

Today's Presentation

- Provide a brief overview of SOAR and the SOAR process.
- Discuss the SOAR critical components
- Share how various states and communities have successfully implemented SOAR
- Question and Answer

3



3

What is SOAR?

- A model for assisting eligible individuals to apply for Social Security Administration (SSA) disability benefits
- For individuals who are experiencing or at risk of homelessness and have a serious mental illness, co-occurring substance use disorder, or other physical disabilities
- Sponsored by SAMHSA in collaboration with the Social Security Administration (SSA) since 2005
- All 50 states and Washington, DC currently participate

4



4

SSI and SSDI: The Basics

Supplemental Security Income (SSI)

- Eligibility based on need: low income and resources; living arrangement
- Monthly amount based on Federal Benefit Rate: \$914/month (2023)
- Date of eligibility based on Protective Filing Date/Application Date
- Health insurance: Medicaid

Social Security Disability Insurance (SSDI)

- Eligibility based on insured status (FICA payments)
- Monthly amount based on earnings history
- Date of eligibility based on “date of onset” of disability, 5 month waiting period
- Health insurance: Medicare

5

*<https://www.ssa.gov/ssi/text-general-ussi.htm>



5

SSI/SSDI Eligibility: Definition of Disability for Adults

SSA's Definition of Disability



Medical Condition(s)

- Diagnosis
- Documentation
- Duration



Functional Impairment(s)

- Severity
- Work
- SGA

6



6

SOAR Across the Lifespan

Children

- Birth to age 18
- Eligible for SSI only
- How does the child’s functioning compare to a child of the same age who does not have impairments

Youth and Young Adults

- Age 18-24
- Eligible for SSI and/or SSDI (Disabled Adult Child)
- Application evaluated under the adult definition of disability
- Redetermination
- Youth aging out of foster care

Adults

- Age 18+
- Eligible for SSI and/or SSDI
- Is the applicant able to work and earn at a substantial gainful level?

7



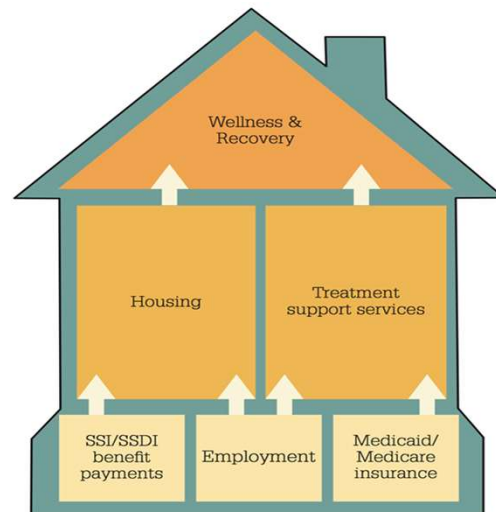
7

A Foundation for Recovery and Resiliency

More Than Income

- Access to more robust health care and housing
- Increased education and employment opportunities
- Decrease in incarcerations and hospitalizations
- Ability to maximize income

SSI/SSDI: One Brick in Foundation



8



8

How do States and Communities Benefit?

SSI and Medicaid bring federal dollars into states, localities, and community programs:

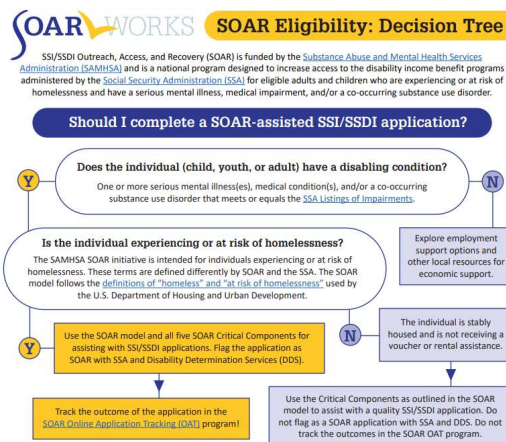
- Health providers can recoup cost of uncompensated care.
- States and localities can recoup the cost of public assistance.
- Cash benefits and back payments received by individuals is spent in the local community (2021: \$564 million*).

* <https://soarworks.samhsa.gov/article/soar-outcomes-and-impact>



Who is a SOAR Applicant?

We want to ensure that ALL eligible applicants are served appropriately.



SOAR WORKS Reducing Implicit Bias and DEI Considerations for Identifying SOAR Applicants

The SAMHSA SOAR TA Center is working to reduce the influence of implicit bias and encourage diversity, equity, and inclusion during the process of identifying potential applicants to assist with SOAR-assisted SSI/SSDI applications. Included are helpful tips to consider when utilizing the Identifying SOAR Applicant tool. This guidance asks you to consider how a potential applicant's racial, ethnic, and cultural views regarding disabilities, diagnoses, symptoms, and treatment as well as their socioeconomic and homelessness status may factor into a SOAR caseworker's decision to assist them with a SOAR-assisted SSI/SSDI application.

The overarching questions we encourage you to ask yourself are:

- Am I only assisting individuals with SOAR-assisted SSI/SSDI applications who have a formally diagnosed mental and/or physical health condition(s) and who are currently engaged in treatment?
- Am I "screening out" potential SOAR applicants who may qualify for SSI/SSDI benefits, but do not yet have a formal diagnosis and have not yet received treatment?

Eligibility Criteria	Information to Consider
Key Eligibility Criteria for SSA Disability Benefits	<ul style="list-style-type: none"> • Are there racial, ethnic, or cultural reasons why a potential applicant may not consider themselves as someone who has a disability, serious mental illness, or has mental health symptoms? • Are there reasons such as current mental health symptoms/impairments and education level which may prevent a person from being able to accurately describe their illness, symptoms, and functional limitations? • Are there engagement and communication strategies that you can employ when working to identify a potential SOAR applicant that keep these considerations in mind?
SOAR Recommends: Characteristics that may Strengthen an SSI/SSDI Application	<ul style="list-style-type: none"> • Are there racial, ethnic, or cultural reasons why a potential applicant might not be taking psychiatric medications? • Are there racial, ethnic, or cultural reasons why a potential applicant might not be receiving psychiatric treatment for their mental illness or medical condition(s) due to community stigma, socioeconomic status, or... has mental health symptoms? • Are there reasons such as current mental health symptoms/impairments and education level which may prevent a person from being able to accurately describe their illness, symptoms, and functional limitations? • Are there engagement and communication strategies that you can employ when working to identify a potential SOAR applicant that keep these considerations in mind?
SOAR Recommends: Characteristics that may Strengthen an SSI/SSDI Application	<ul style="list-style-type: none"> • Are there racial, ethnic, or cultural reasons why a potential applicant might not be taking psychiatric medications? • Are there racial, ethnic, or cultural reasons why a potential applicant might not be receiving psychiatric treatment for their mental illness or medical condition(s)? Is there community stigma associated with mental illness or physical disability they are currently or have historically experienced? • Does the potential applicant have significantly less access to psychiatric and/or medical treatment in their community that may be related to their race, ethnicity, culture, or socioeconomic status? • Has the potential applicant been unable to access psychiatric and/or medical treatment due to their lack of income, lack of health insurance, and/or homelessness status? • Before "screening out" a potential applicant who does not take psychiatric medications and does not yet have obtainable medical evidence, can you employ any outreach strategies that may assist this potential applicant with accessing this treatment or an assessment for their illness(es)/condition(s)?



What Makes SOAR Unique?



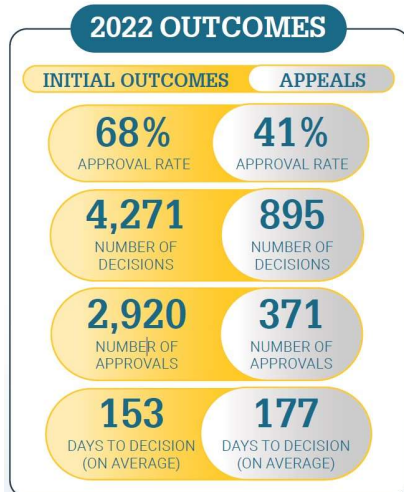
SOAR-trained case workers are the heroes!



11

11

SOAR Works!



*National SOAR outcomes as of June 30, 2022

<https://soarworks.samhsa.gov/about-the-model/oat-and-outcomes>



12

12

2022 Financial Outcomes

FINANCIAL OUTCOMES

- \$25,180** → average Medicaid reimbursement per beneficiary
- \$1,686** → average general assistance reimbursement
- \$6,552** → average retroactive back payment
- \$630M** → brought into the economies of participating localities

13



13

SOAR Super Stars!



TOP STATES

TOP 10 STATES*

- | | |
|----------------|----------------|
| Pennsylvania | Wyoming |
| Tennessee | Oklahoma |
| Maryland | Virginia |
| Arkansas | Washington, DC |
| North Carolina | Nevada |

81%

APPROVAL RATE



SOAR Critical Components

Using these five SOAR Critical Components, case workers play a central role in gathering complete, targeted, and relevant information for SSA and DDS, resulting in high-quality SSI/SSDI applications. These components significantly increase the likelihood of an approval for those who are eligible.

1. Serving as the Applicant's Representative
2. Collecting and Submitting Medical Records
3. Writing and Submitting a Medical Summary Report (MSR)
4. Obtaining a Co-signature on the MSR by an Acceptable Medical Source
5. Completing a Quality Review of Applications Prior to Submission

*Inclusion: Highest cumulative approval rates on initial application for states with at least 300 cumulative decisions, at least 24 decisions in 2022 (2 per month), and a 2022 approval rate above the national average.

14 Combined, these states had 20,551 decisions



14

Pennsylvania State Outcomes

- Pennsylvania
 - 346 SOAR-assisted applications
 - 91% approval rate
 - 102 average days to decision
- Philadelphia
 - 218 SOAR-assisted applications
 - 97% approval rate
 - 72 average days to decision
- Pittsburgh
 - 113 SOAR-assisted applications
 - 82% approval rate
 - 149 average days to decision
- Outcomes from other areas: 45 decisions

15



15

SOARWorks Pennsylvania: Looking Forward

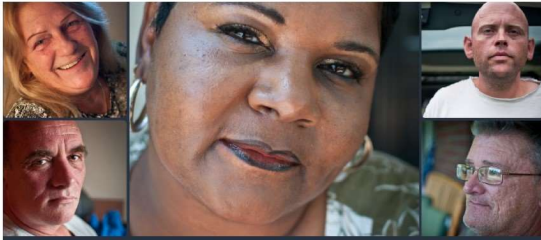
- Continue to grow SOAR throughout the state, emphasizing the BOS counties
- Establish additional SOAR Local Leads
- Gain additional funding for SOAR dedicated staff
- Increase the number of SOAR assisted applications statewide

16



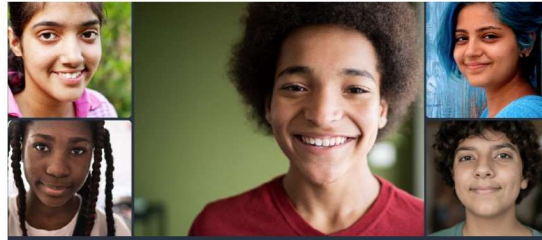
16

The SOAR Online Course



SOAR Online Course: Adult Curriculum

This course trains case workers to assist adults (age 18+) who are experiencing or at risk of homelessness and have a serious mental illness, medical impairment, and/or a co-occurring substance use disorder to apply for the Social Security Administration's (SSA) disability programs, Supplemental Security Income (SSI) and Social Security Disability Insurance (SSDI).



SOAR Online Course: Child Curriculum

This course trains case workers to assist children (under age 18) who are experiencing or at risk of homelessness and have a serious mental illness, medical impairment, and/or a co-occurring substance use disorder to apply for Supplemental Security Income (SSI), a Social Security Administration (SSA) disability benefit program.

- Standardized training provided across all geographic areas
- SOAR Leaders can coordinate follow-up training and support
- Course is FREE, web-based, and self-guided
- 20 CEUs from National Association of Social Workers (NASW)

17

SAMHSA
Substance Abuse and Mental Health
Services Administration

17

The Training and Becoming Involved

- Emphasis on being able to commit time to complete and submit quality applications
- 20-40 hours per complete application
- Completing all SOAR critical components
- Tracking outcomes

18



Getting Involved with SOAR

You want to be a SOAR provider? That's great! Here's what to expect.

SOAR promotes recovery and wellness through increased access to Social Security disability benefits for eligible individuals who are experiencing or at risk of homelessness and have a serious mental illness, medical impairment, and/or a co-occurring substance use disorder. SOAR providers assist individuals with complete and quality applications. This is not an easy task, and we want to be sure that you understand the commitment required – we believe it is well worth the effort!

Training

The SOAR Online Course trains providers to assist individuals with the Social Security disability application process. The course includes an Adult Curriculum for assisting with Supplemental Security Income (SSI) and Social Security Disability Insurance (SSDI) claims for adults and a Child Curriculum for assisting with SSI claims for children.

- The SOAR Online Course: Adult and Child Curriculums are free and are located on the SOARWorks website (<https://soarworks.granic.com/content/soar-online-course-catalog>).
- Each curriculum consists of seven classes, each of which has a series of articles, short quizzes, and a practice case component. The practice case provides an opportunity for trainees to apply what they have learned in the course by completing a sample application packet for a fictitious applicant using SOAR techniques.
- It takes approximately 20 hours to complete each curriculum and participants can work at their own pace, starting and stopping as they wish. However, we encourage students to complete the curriculum within 30 days to retain the information learned.
- Upon successful completion, participants will receive 20 CEUs (continuing education units) from the National Association of Social Workers (NASW).

Many SOAR Local Leads offer one-day SOAR Online Course Review Sessions to review key components of the curriculum, discuss local/state practices, and connect new providers to local Social Security Administration (SSA) and DDS (Disability Determination Services) offices.

Time Commitment

We estimate that each SOAR application will take approximately 20-40 hours to complete, from initial engagement to receiving a decision on a claim. This generally occurs over the course of 60-90 days.

- The time spent on each application will vary depending on the amount of engagement that is needed as well as other variables such as the experience level of the SOAR worker. For example, engagement with an applicant who is residing in an institution may take 20 hours, while it may take longer to connect with someone who is living outside or difficult to contact.

SOAR Critical Components

SOAR providers with higher approval rates credit their success to implementing the SOAR critical components¹ and submitting high quality applications. Use of these components significantly increases the

SAMHSA
Substance Abuse and Mental Health
Services Administration

18

Successful SOAR Communities


Collaboration is key!

19



19

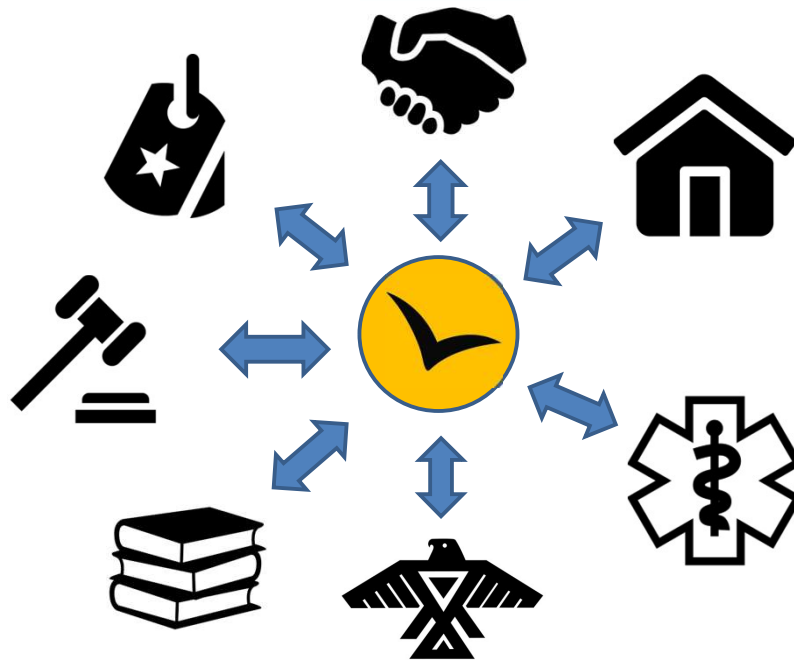
Successful Outcomes Occur When:

- Persons assisting with applications are SOAR-trained and implement the model
- There is an eligible applicant
 -  *SOAR Tool: Identifying SOAR Applicants*
- Providers are offered ongoing support
- There is collaboration between SSA, DDS, and the SOAR provider
- Communication between SOAR partners is maintained



20

Community Collaborations



21

SAMHSA
Substance Abuse and Mental Health
Services Administration

21

The SOAR Critical Components

- As the applicant’s representative a SOAR-trained case worker works collaboratively with the applicant to submit a complete SSI/SSDI application:
 - Regular communication with the applicant
 - Extensive engagement process
 - Clearly link the applicant’s diagnoses to their functional limitation
 - Case worker will communicate regularly with SSA and DDS, and provide additional information when needed



SOAR Critical Components

Using these five SOAR Critical Components, case workers play a central role in gathering complete, targeted, and relevant information for SSA and DDS, resulting in high-quality SSI/SSDI applications. These components significantly increase the likelihood of an approval for those who are eligible.

1. Serving as the Applicant's Representative
2. Collecting and Submitting Medical Records
3. Writing and Submitting a Medical Summary Report (MSR)
4. Obtaining a Co-signature on the MSR by an Acceptable Medical Source
5. Completing a Quality Review of Applications Prior to Submission

22

SAMHSA
Substance Abuse and Mental Health
Services Administration

22

The SOAR Critical Components

- Serving as the applicant's SSA-1696 representative allows the case worker to apply for and represent the applicant.
- Caseworkers will collect and submit all the applicant's medical records; this ensures that DDS has the records and is a critical part of the Medical Summary Report (MSR).
- Write a 5-7 page MSR that clearly links the applicant's diagnoses to their functional limitations and ability to work.
- A co-signature by an Acceptable Medical Source (AMS) makes the MSR medical evidence.
- Submitting complete and quality applications is the reason SOAR works!

23



23

Funding for SOAR

- Dedicated funding is not required to begin/grow a SOAR initiative, but it is helpful.
- Funding for dedicated SOAR case workers is the eventual goal.
- Successful SOAR outcomes will increase the likelihood of dedicated funding.
- Discussions about funding should be held early and often.

24



24

Funding SOAR Programs

- All 50 states participate in SOAR by:
 - Reallocating existing resources
 - Securing funding through federal and state grants and foundation funding
 - Establishing collaborations with hospitals, legal settings, or other specialty funding

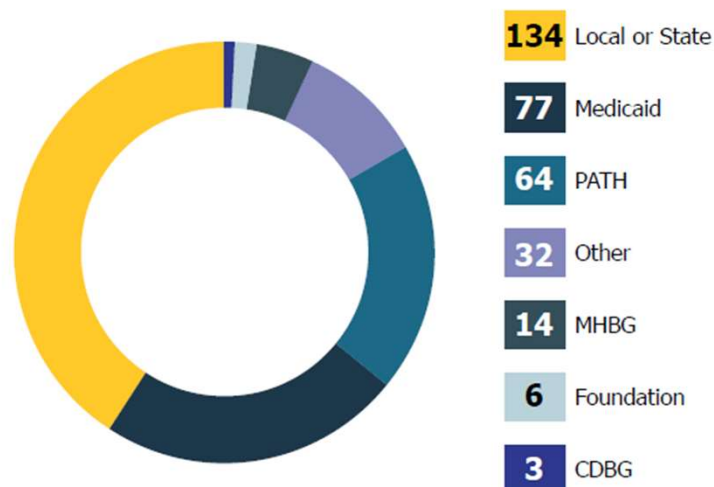
25

SAMHSA
Substance Abuse and Mental Health
Services Administration

25

2022 Funding Sources

330 Full-Time Dedicated SOAR Positions



26

SAMHSA
Substance Abuse and Mental Health
Services Administration

26

Virginia SOAR Initiative

- Upon completion of the SOAR Online Course trainees attend a two day/session Virginia SOAR Certification course, where they learn the Virginia SOAR process, and are introduced to their SOAR Local Leads and SSA/DDS contacts.
- Local Leads are available in each area of the state for support; they mentor new trainees and perform quality review.
- The SOAR State Team Lead and Local Leads also regularly review data in OAT and provide an updated list of SOAR-trained case workers to SSA and DDS.

27



27

State or County General Assistance (GA)

- GA funds offer time-limited cash benefits to adults without dependents who have limited or no income
 - These benefits are not available in every state
- Through an Interim Assistance Reimbursement (IAR) agreement, SSA can reimburse state or local public assistance funds when individuals begin receiving SSI
 - In 2022, states reported average reimbursements of **\$1,686 per person**

28



28

Successful Models: North Carolina

- Combined funding streams from: foundations, hospitals, local, state, and federal
- Focus on helping localities develop and sustain benefits specialist positions
- 31 FTEs and 8 PTEs or Volunteer in 18 counties
- 3,112 applications, 76% approval rate, in 2021

29



29

SOAR and University Social Work Programs

- Partnerships between SOAR and University Social Work programs can yield great results!
- Incorporate SOAR into university level BSW or MSW coursework.
- Work with the social work field placement office to place SOAR-trained students within agencies or allocate a field placement to be SOAR dedicated.
 - Poverello Center in Missoula, Montana trains their MSW/BSW interns to complete SOAR applications.
 - University of Texas, Arlington and University of California, Long Beach incorporate the SOAR Online Course into their curriculum.

30



30

Integrating SOAR with Peer Certification

- SOAR trained peer workers can play a vital role in increasing agency capacity to serve more applicants, provide support to existing SOAR trained staff, and improve quality of applications.
- The requirements for certifying peer support specialists vary by state, and certification bodies range from state government entities to independent non-profit organizations.
- Collaborating with Peer Certification Boards to integrate SOAR within the Peer Certification Process is a viable strategy for supporting SOAR work in your community!

31



31

Wrapping Up

- SOAR is worth the effort!
- Timely access to Social Security Disability Benefits changes lives
- SOAR can work within your community!
- The SAMHSA SOAR TA Center, SOAR State Team Lead, and SOAR Local Leads are here for support!

32



32

Questions?

Question & Answer
Open Discussion



33

SAMHSA
Substance Abuse and Mental Health
Services Administration

33

Connect with me!

Abigail Kirkman
Assistant Director
SAMHSA SOAR Technical Assistance Center
at Policy Research Associates, Inc.
Pennsylvania Liaison
akirkman@prainc.com
(518) 439-7415, EXT: 5226

34

SAMHSA
Substance Abuse and Mental Health
Services Administration

34

Thank You

SAMHSA's mission is to reduce the impact of substance abuse and mental illness on America's communities.

<https://soarworks.prainc.com>

soar@prainc.com

www.samhsa.gov

1-877-SAMHSA-7 (1-877-726-4727) • 1-800-487-4889 (TDD)

35

35