

Coordinated Entry Redesign

→ Regional Coordinated Entry Design



1

Agenda

- Welcome, Introductions, and Agenda (10 minutes)
- System, Requirements, and Options Overview (20 minutes)
- Decision-Making Workshop (75 minutes)
- Next Steps (15 minutes)



2

Introductions

Come off mute or introduce yourselves:

- Name
- Pronouns and any other identities you want to share
- Organization
- Role in coordinated entry (e.g. case manager...)



3

3



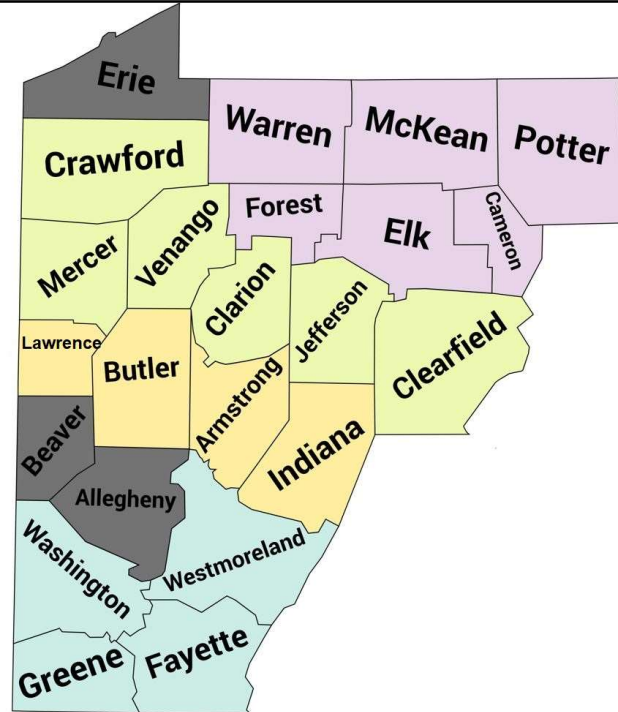
Overview: Regions and Regional Requirements

4

4

About Regions

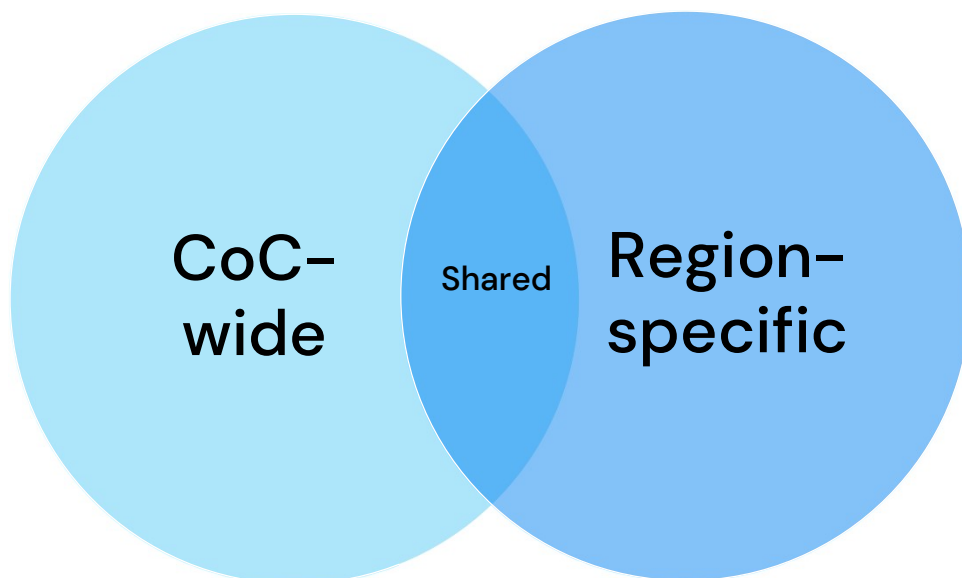
- Multi-county
- Geographically contiguous
- Locally coherent
- Include at least one strong CE provider ("anchor agency")
- Ensure less well-resourced areas are supported



5

5

Coordinated Entry System Design Requirements



6

6

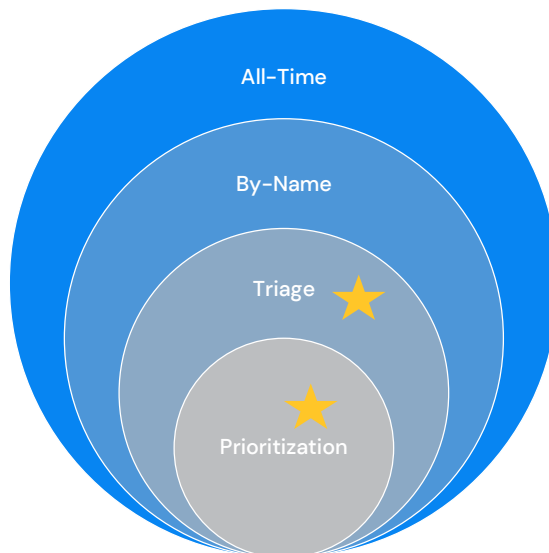
Coordinated Entry System Design Requirements



7

7

List Management



Households are selected from the Prioritization list.

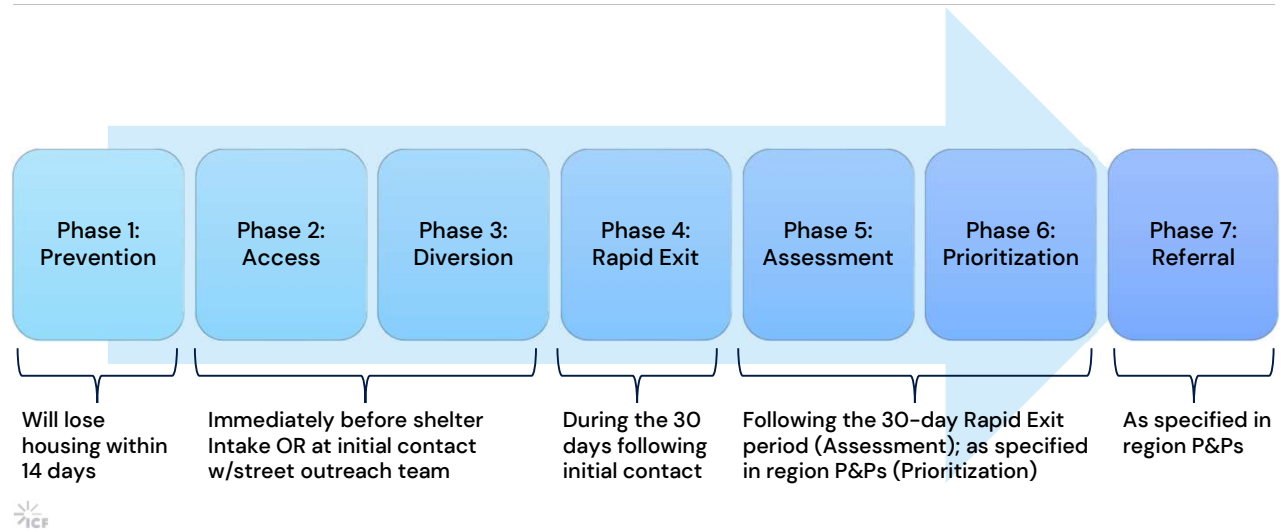
- Quick cycles of households at a time per region
 - Always the most critical households
 - How many? Determined at the regional level
- No aging out/cycling off this list until housed



8

8

Coordinated Entry 2.0



9

Overview: Decision Points

10

10

Required Decision Points



- Who is responsible for **creating and updating** your regional P&Ps?
- What is the **approval process** for your regional P&Ps?
- Who is your **anchor agency**?
- Outreach:
 - How will you ensure it **reaches all people**, including those hardest to reach?
- Diversion and Rapid Exit:
 - **Who conducts it?** Is the answer different for shelters w/o federal funding?
 - **How to pay for it?** Is there a general fund? What can it pay for? Who decides how it's allocated?
- Case conferencing for Prioritization:
 - **Where does it happen?** One or multiple places? In-person, virtual, or hybrid?
- **How often?** On a specific schedule or as-needed? Can someone call ad hoc meetings?
- **Who attends?** Is it person-specific, agency-specific, program-specific?
- Prioritization decisions:
 - How do you **weight the VI-SDPAT** against other factors?
 - What **other factors** do you consider?
 - Who **has input** into these conversations?
 - Who **makes decisions** about triage and prioritization in general?
 - If the normal decision-making process stalls, who is **ultimately responsible** for triage and prioritization decisions?



11

Suggested Decision Points



- **When and how often** do you update your regional P&Ps?
- Are there **other agencies** besides your anchor agency that have formal roles?
- Is there **formal coordination** between your outreach providers?
- How do you decide when to **continue Rapid Exit** services?
- Who is responsible for **document readiness** for prioritized households?
- Do you have **separate case conferencing** for households that are not yet prioritized (e.g. for prioritizing ongoing outreach or Rapid Exit)?
- Are there **other programs** included in coordinated entry at a regional level (e.g. local funding, a single PHA)?
- What about ESG-funded **homelessness prevention**? Do you coordinate between providers?
- Are there any **data considerations** that are region-specific?
- Do you have region-specific **VSP processes**?



12



13

Ground Rules

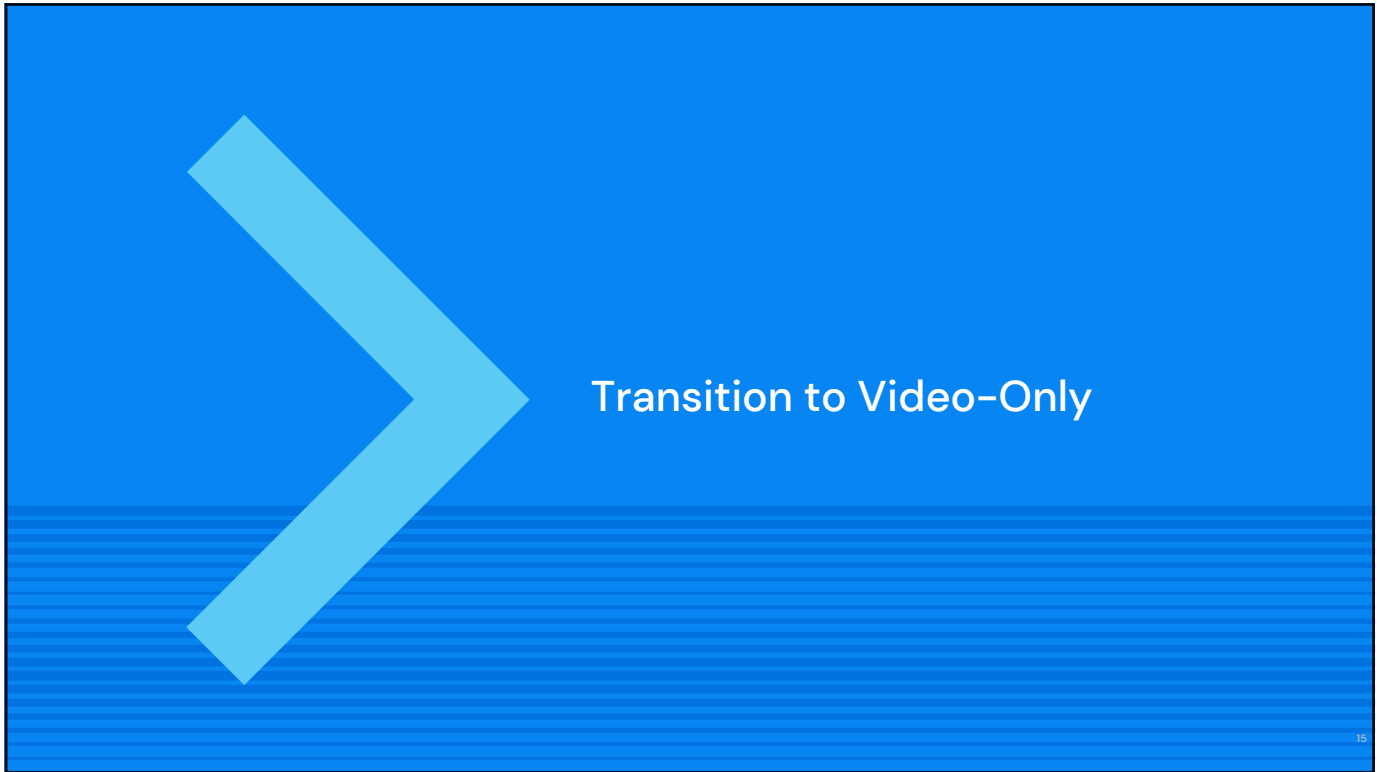


- It's okay to make **as many or as few choices today** as you feel comfortable with
- Regional P&Ps still need to be ratified at the CoC level—so **nothing you decide today is final**
- This is a **workshop and discussion** session; ICF is here to guide, not decide
- All of you are invested in this system, so **hold space for each other** regardless of agency or position of authority; good ideas can come from anyone
- Practice **WAIT**—"why am I talking?" and also "why aren't I talking?"

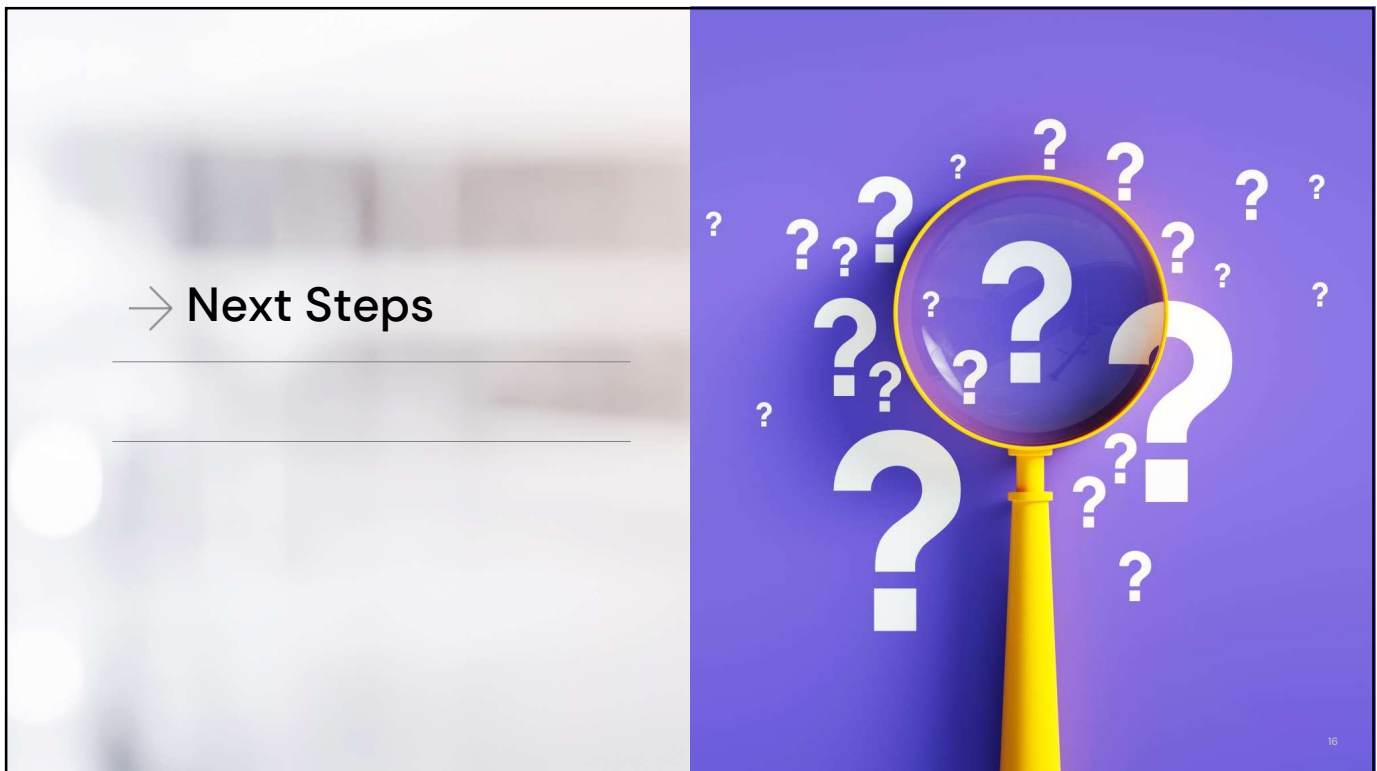
Are there **other agreements or principles you want to suggest for today?**



14



15



16