

Pennsylvania
Department of Human Services

Mainstream Benefits Training for Continuums of Care and Homeless Assistance Program Providers

May 13, 2024

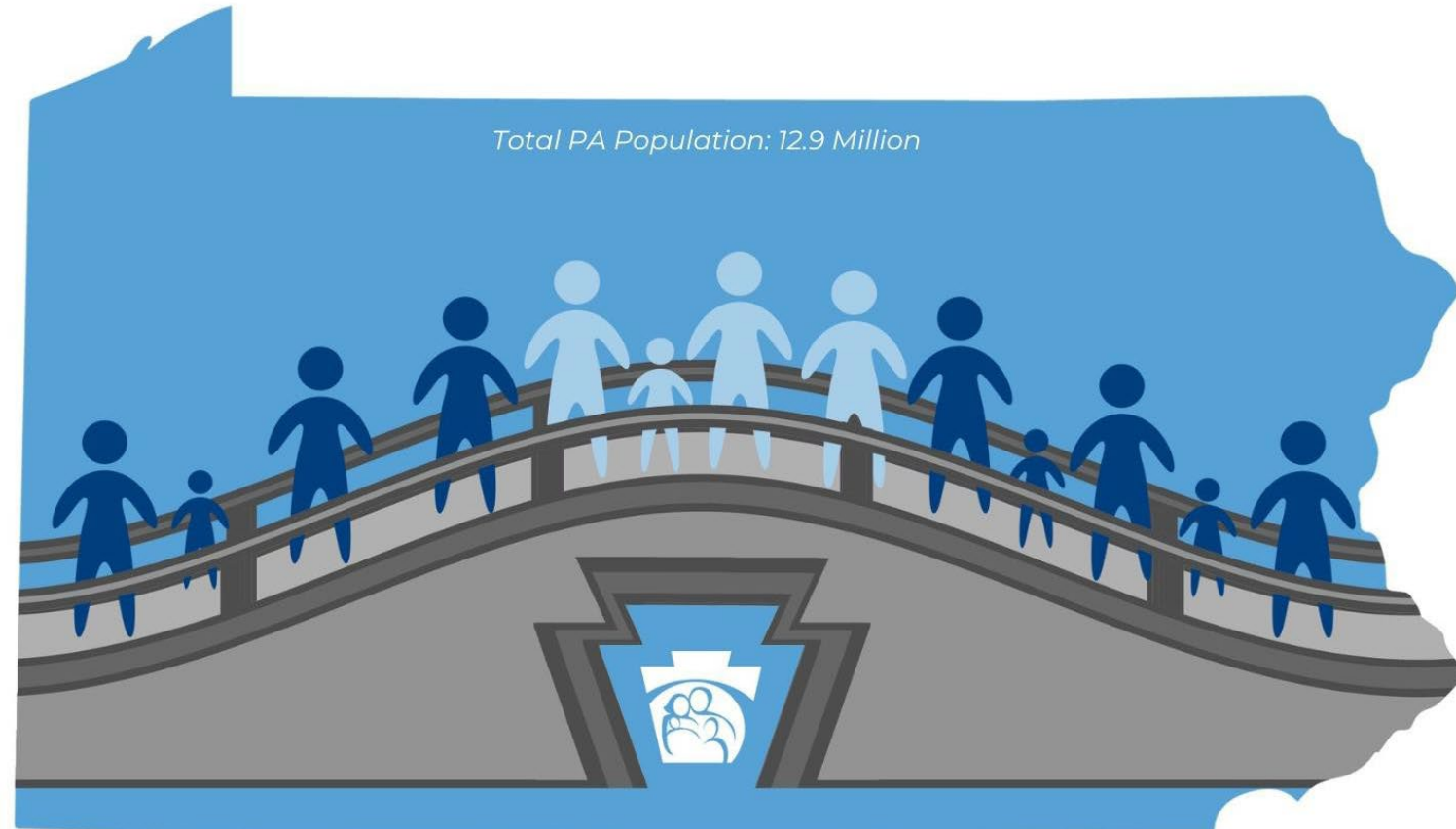


Pennsylvanians Served by DHS

DHS MISSION AND VISION

Our **mission** is to assist Pennsylvanians in leading safe, healthy, and productive lives through equitable, trauma-informed, and outcome-focused services while being an accountable steward of Commonwealth resources.

Our **vision** is that all Pennsylvanians live safe, healthy, and independent lives, free of discrimination and inequity.



3.5 Million Directly Served Through Public Assistance Programs



9+ Million People Reached Through Provider Licensing, Protective Services, and Other Supports

DHS Housing Services and Programs

The following are highlighted samples of DHS housing services and programming.

<p>Department of Human Services-Wide</p> <ul style="list-style-type: none"> • Bridges to Success: Keystones of Health for Pennsylvania • Human Services Block Grants • Support of the Regional Housing Coordinator program 	<p>Office of Administration</p> <ul style="list-style-type: none"> • Mass Care and Emergency Assistance • Support for communities after disaster 	<p>Office of Child Development and Early Learning</p> <ul style="list-style-type: none"> • Child Care Works • Early Learning Resource Centers • Pennsylvania Head Start State Collaboration Office, Early Childhood Homeless Stakeholders • Continuums of Care and Head Start Working Together
<p>Office of Children, Youth and Families</p> <ul style="list-style-type: none"> • Independent Living and Chafee Foster Care Programs • Stable Housing Interventions in Facilitated Teams (SHIFT) • Needs Based Budget 	<p>Office of Developmental Program</p> <ul style="list-style-type: none"> • Everyday Lives • Lifesharing • Housing Transition and Tenancy Sustaining Services 	<p>Office of Income Maintenance</p> <ul style="list-style-type: none"> • Homeless Assistance Program • Low-Income Home Energy Assistance Program • Emergency Rental Assistance Program • Emergency Shelter Allowance • Temporary Assistance for Needy Families Diversion • Refugee Resettlement Program
<p>Office of Long-Term Living</p> <ul style="list-style-type: none"> • Community HealthChoices • Nursing Home Transitions Program 	<p>Office of Medical Assistance Programs</p> <ul style="list-style-type: none"> • Physical HealthChoices • Community-Based Care Management 	<p>Office of Mental Health and Substance Abuse Services</p> <ul style="list-style-type: none"> • Reinvestment and Housing Strategies • Behavioral HealthChoices • SSI/SSDI Outreach, Access, and Recovery • Projects for Assistance in Transition from Homelessness

Collaborating on Commonwealth Priorities

[Governor Shapiro's proposed 2024-2025 budget](#) includes the following investments to create opportunities and support stability while cutting costs for Pennsylvania families.

- Increases funding by \$10 million for the [Homeless Assistance Program](#), where rental assistance, bridge housing, emergency shelter, eviction prevention, and other innovative supportive housing services can be provided.
- Increasing the resources available for the [Pennsylvania Housing Affordability and Rehabilitation and Enhancement \(PHARE\) Fund](#) by \$10 million every year for the next 4 years to help rehabilitate properties in need of repair and build new homes and apartments, and address critical housing needs by raising cap to \$100 million by 2027-28.
- Investing \$5 million in flexible grant funding for cities and counties to address immediate housing needs at the local level until disaster relief or other funding can be identified and be made available.
- Providing \$5 million in matching funds to ensure tenants have access to legal representation in eviction proceedings and keep more Pennsylvanians in their homes.
- Continuing \$50 million for the [Whole-Home Repairs Program](#) to support homeowners with essential home repairs, increase accessibility, and energy efficiency upgrades to keep more families in their homes.
- Cutting costs for older adults and working families through expanding the [Property Tax and Rent Rebate Program](#) and the [Child and Dependent Care Enhancement Tax Credit](#).

DHS Updates

- [Bridges to Success: Keystones of Health for Pennsylvania](#)
- Updating the [2024- 2029 DHS Housing Strategy](#)
- [Emergency Rental Assistance Program](#)
- [PA Navigate](#) – a collaborative effort to support coordination and connection to community resources among health information organizations (HIOs) and brings together multiple state agencies, counties, local non-profits and community organizations, health care entities, and social services providers.

JOIN THE HOUSING STRATEGY EMAIL LIST

Complete this short survey to receive email updates!



Keystones of Health is a proposed five-year demonstration program. All content is preliminary and subject to approval by the Centers for Medicare & Medicaid Services, and subject to the budget appropriations process with the General Assembly.