

# Refugee 101



# Contents



Background

Who is a refugee?

How does Pennsylvania help refugees?

How to contact PA RRP?

Review and Questions

Who is a  
refugee?

Someone who is unable or unwilling to return to their country of origin owing to a well-founded fear of being persecuted for reasons of race, religion, nationality, membership of a particular social group, or political opinion.

*-United Nations High Commission for Refugees*



**pennsylvania**

DEPARTMENT OF HUMAN SERVICES

# Legal Authorization for Refugee Programs



## **The Refugee Act of 1980:**

- Strengthened the U.S. historic policy of aiding individuals fleeing persecution in their homelands
- Established the federal Office of Refugee Resettlement (ORR) within the U.S. Dept. of Health and Human Services (DHHS)
- Provided standardization of resettlement services for all refugees admitted to the U.S.
- Made possible several types of assistance such as cash, medical, social, employment, matching grant, discretionary assistance, education, and health programs.
- Outlined the provisions of Refugee Support Services (RSS) programs to assure compliance with Title 45 of the Code of Federal Regulations (CFR), Parts 400 and 40.
- The PA Department of Human Services' Bureau of Employment Programs funds and coordinates the above-referenced programs with regionally-based providers.

# Refugee Countries of Origin in Pennsylvania

Over the last three years:

- Democratic Republic of Congo
- Syria
- Afghanistan
- Myanmar
- Iraq
- Cuba
- Haiti
- Venezuela
- Pakistan
- Guatemala



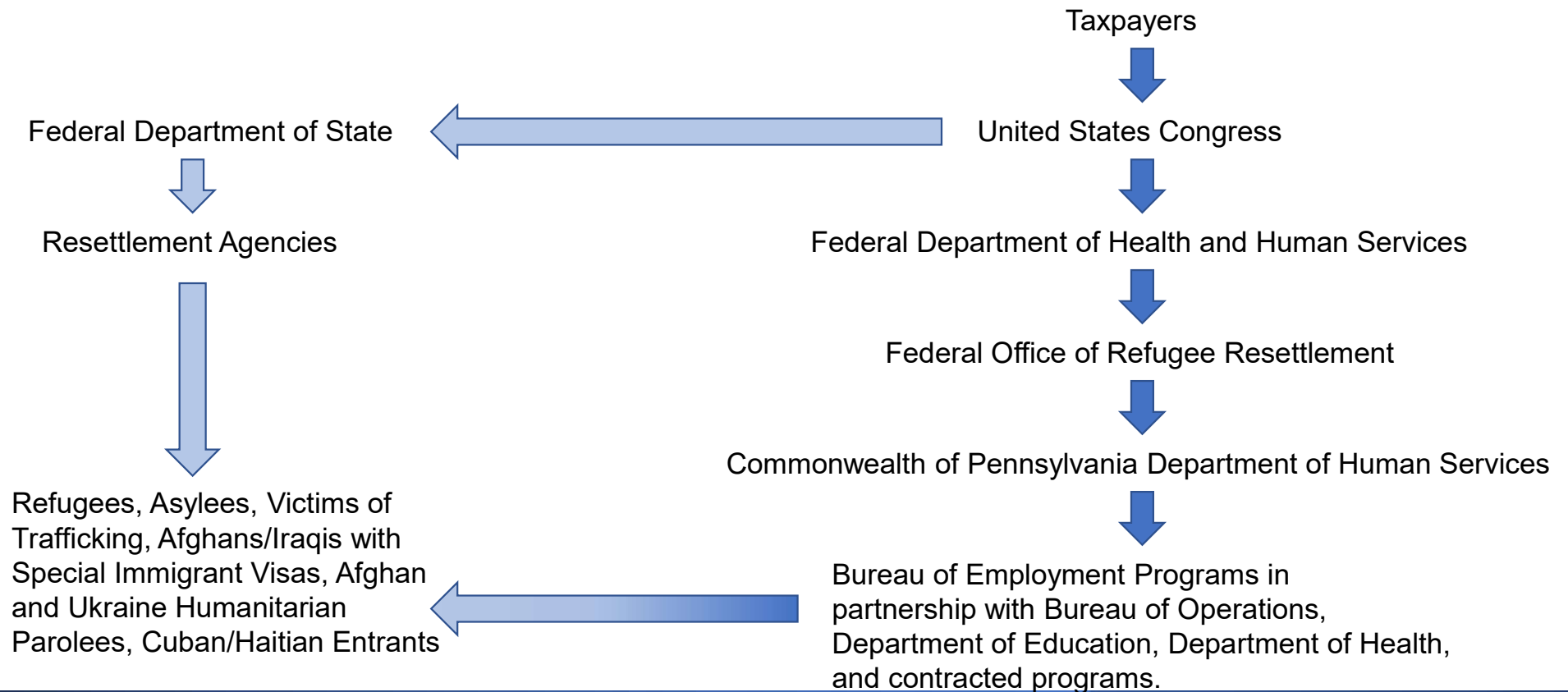
**pennsylvania**

DEPARTMENT OF HUMAN SERVICES

# How are Refugee Programs Funded?



**pennsylvania**  
DEPARTMENT OF HUMAN SERVICES



# How does Pennsylvania Help Refugees?



PA Department of Human Services utilizes all County Assistance Offices, and contracts with refugee-serving agencies throughout the state to offer the following benefits and services:

- Refugee Cash Assistance – offered in all 67 counties
- Refugee Medical Assistance – offered in all 67 counties
- Medical and Mental Health Screening – offered in all five regions
- Refugee Support Services – Erie, Pittsburgh, Harrisburg, Lancaster, Scranton, Allentown, and Philadelphia
- Set-Aside Programs for youth and older populations – Erie, Pittsburgh, Lancaster, Allentown, and Philadelphia
- Unaccompanied Refugee Minors Program – Southeast Philadelphia
- Refugee Health Promotion and Mental Health Initiatives Programs - Statewide
- Wilson-Fish TANF Cooperation Program – all five regions
- Refugee School Impact Grant – all five regions

# Refugee Contracted Partners and Coverage Areas



**pennsylvania**  
DEPARTMENT OF HUMAN SERVICES

1

## West - Pittsburgh

- JFCS
- AJAPO
- BCS Wexford
- Hello Neighbor

2

## Central - Harrisburg/Lancaster

- CWS Harrisburg
- Catholic Charities of Harrisburg
- Jewish Family Services of Greater Harrisburg
- CWS Lancaster
- BCS Lancaster
- International Service Center

3

## Southeast - Philadelphia

- HIAS PA
- Nationalities Service Center
- JEVS
- New World Association
- BCS Greater Delaware Valley

4

## Northeast - Allentown/Scranton

- BCS Allentown
- Catholic Social Services of Scranton

5

## Northwest - Erie

- USCRI Erie
- Catholic Charities of Erie
- MCRC



# Federal Fiscal Year 2024 Projections

- The Biden Administration seeks to welcome 125,000 refugees nationally.
- PA is on track to receive more than 9000 refugees, the largest traditional resettlement effort in its history.
- Private resettlement of refugees through [Welcome Corps](#), Private Sponsor Groups are in various stages of application, approval, and arrival of refugees.
- Private sponsorship through the Cuban/Haitian/Nicaraguan/Venezuelan sponsorship program.
- A substantial increase of Cubans and Haitians in both urban and rural communities of PA. Some arriving as sponsored, others cross the southern border.
- Ongoing arrivals of Ukrainians although these are trending down.



**pennsylvania**

DEPARTMENT OF HUMAN SERVICES

# ORR-Eligible Populations



## “Traditional” Refugees

- Come via the U.S. Refugee Admissions Program
- Are resettled with assistance from resettlement agencies
- Usually resettle in one of our designated refugee regions:
  - Philadelphia
  - Pittsburgh
  - Erie
  - Allentown/Scranton
  - Lancaster/Harrisburg

## “Non-traditional” Refugees

- Do not come through the U.S. Refugee Admissions Program
- Resettled by private sponsorship organizations
- Are not immediately connected to Refugee Service Provider Agencies
- Self-resettle, in any county in Pennsylvania
- Examples:
  - Cuban/Haitian Entrants
  - Ukrainian Humanitarian Parolees

# Pennsylvania Refugee Resettlement Program

The mission of the Pennsylvania Refugee Resettlement Program (PA RRP) is to help refugees and their families obtain employment, economic self-sufficiency, and social integration within the shortest possible time after their arrival into the commonwealth.

State Refugee Coordinator – Charlotte Fry

State Refugee Health Coordinator – Leena Anil

Area 1 & 5 Program Advisor – Frank Butcher

Area 2 & 4 Program Advisor – Karen McCarthy Toren

Area 3 Program Advisor – Keith Heffle

Refugee Health Social Worker – Susan Miller

Program Support Coordinator – Shellie Robinson

Policy Advisor – Botros Botros

Refugee School Impact Grant – Joseph Eye (PDE)



**pennsylvania**

DEPARTMENT OF HUMAN SERVICES

# How to contact PA RRP

Visit [www.refugeesinpa.org](http://www.refugeesinpa.org)



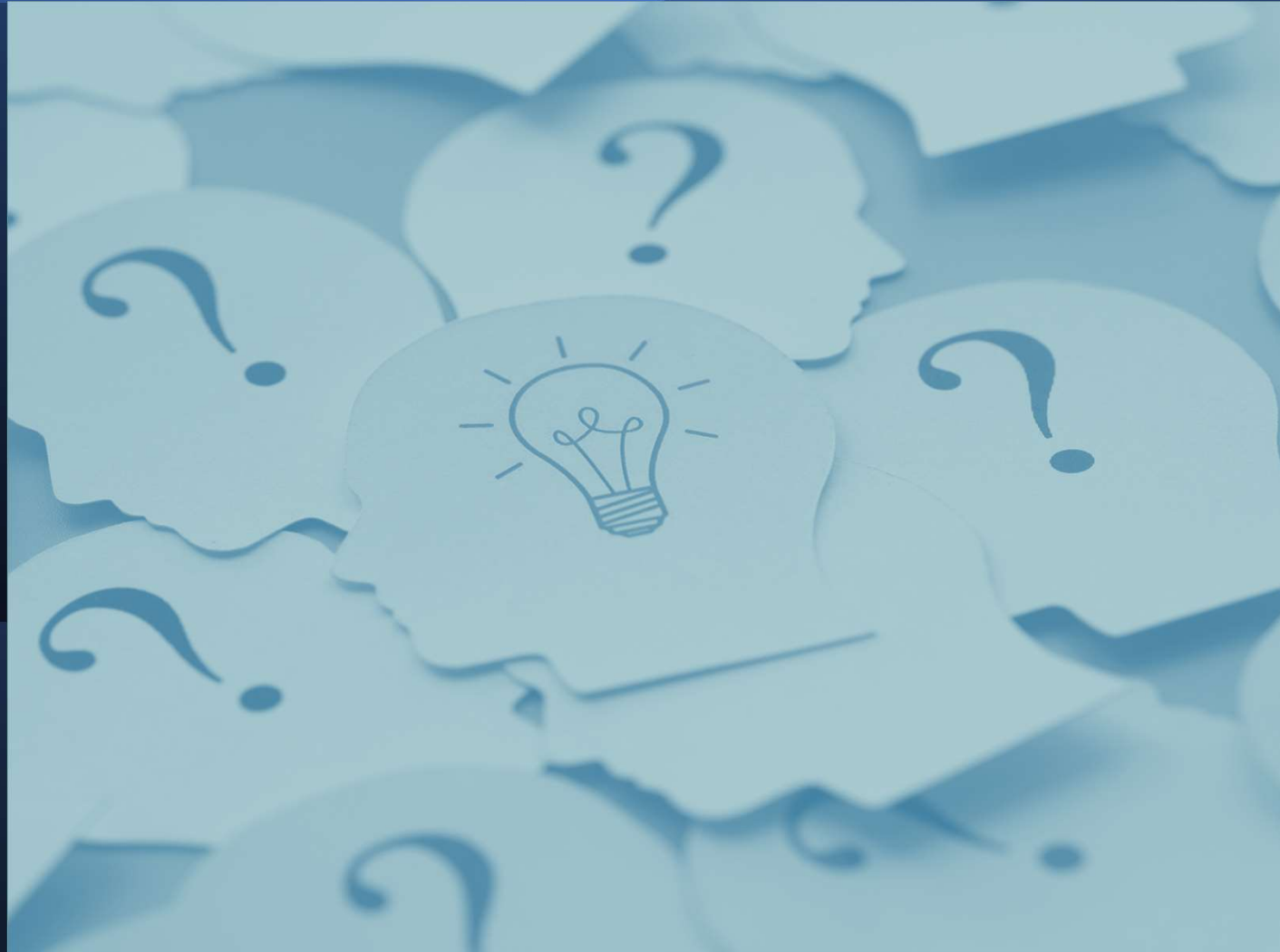
Email: [ra-pwrefugeeprogram@pa.gov](mailto:ra-pwrefugeeprogram@pa.gov)



**pennsylvania**

DEPARTMENT OF HUMAN SERVICES

Questions?

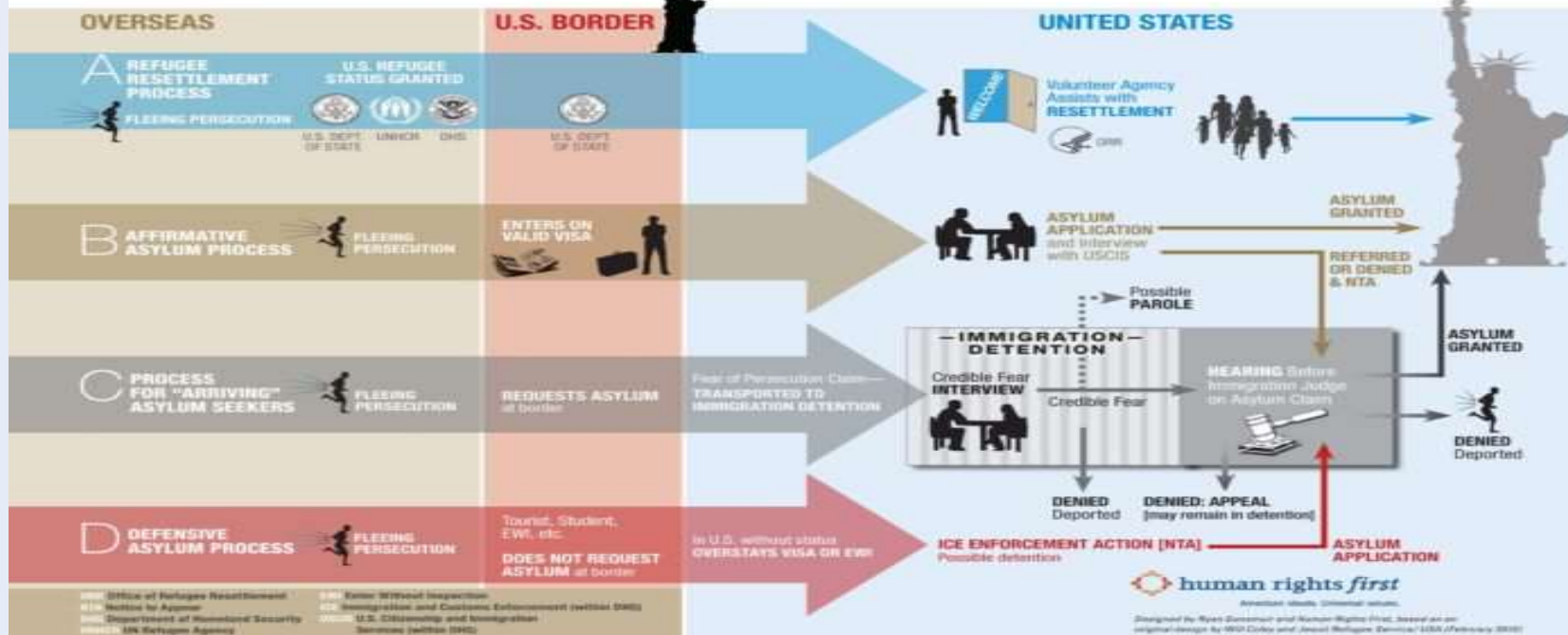


**pennsylvania**  
DEPARTMENT OF HUMAN SERVICES

# Cuban & Haitian Entrants



# How Refugees Get to the U.S.



# Asylum Applicants



Potentially eligible for refugee benefits and services as asylum applicants:

- Cuban Entrants
- Haitian Entrants
- Afghan Humanitarian Parolees (time limited)
- Ukrainian Humanitarian Parolees (time limited)



## What is a Cuban & Haitian Entrant?

- The term 'Cuban Haitian Entrant'(CHE) relates only to eligibility for ORR-Funded Assistance
- CHE is not a status. The status of a CHE varies. A CHE can be a parolee, asylum seeker or in immigration/removal proceedings.



An individual is a CHE if they are:

- An individual granted parole as a Cuban-Haitian Entrant (Status Pending) regardless of the status of the individual at the time assistance or services are provided; **or**
- A national of Cuba or Haiti who is not subject to a final, non-appealable and legally enforceable removal order, **and**:
  - Was paroled into the United States and has not acquired any other status under the Immigration and Nationality Act; **or**
  - Is in removal proceedings under the Immigration and Nationality Act; **or**
  - Has an application for asylum pending with USCIS.



# What is Parole?

## Parole is NOT:

- Indication of criminal activity

## Parole is:

- Permission to enter
- Granted by Department of Homeland Security (*at the port of entry, after arrival or upon release from detention*)
- Discretionary
- Not an immigration status
- Not a pathway to immigration status or permanent residence
- Temporary\*\*\*

\*\*\*Expired parole is acceptable for Cuban Haitian Entrants



**For Cuban and Haitian Entrant status we need three (3) things:**

1. Documentation of Cuban or Haitian nationality
2. Documentation of parole, asylum application, or removal proceedings
3. No final, non-appealable, legally enforceable order of removal, deportation or exclusion called Final Order for Removal (FOR)

# What is TPS?

Temporary Protected Status (TPS) is granted by the Secretary of the Department of Homeland Security (DHS) to eligible foreign-born individuals who are unable to return home safely due to conditions or circumstances preventing their country from adequately handling the return, such as:

- Ongoing armed conflict (such as civil war),
- An environmental disaster (such as earthquake or hurricane), or an epidemic, or
- Other extraordinary and temporary conditions.

During a designated period, TPS holders are:

- Not removable from the U.S. and not detainable by DHS based on immigration status,
- Eligible for an employment authorization document (EAD), and
- Eligible for travel authorization.

# What is TPS?

TPS means Temporary Protected Status. TPS is not a “special status” for Cuban/Haitian Entrant purposes. However, TPS beneficiaries may obtain an “advance parole” document to travel abroad. If a Haitian TPS beneficiary has an I-94 or other entry document indicating that he or she was subsequently permitted to re-enter the United States in “parole” or the I-94 is marked “paroled/TPS,” then the parole entry may permit the individual to be a Cuban/Haitian Entrant. If the document only indicates TPS and does not indicate “parole” in any manner, he or she may not be a Cuban/Haitian Entrant.

TPS alone is not sufficient documentation to demonstrate CHE status.

B  
U  
T

TPS does not *disqualify* an individual for CHE status

If a Cuban or Haitian individual has TPS, they still need to provide sufficient documentation of parole, or another acceptable form of documentation listed in the Status and Documentation guide.

## **How to Contact the PA Refugee Resettlement Program**

Email: [RA-PWREFUGEEPROGRAM@PA.GOV](mailto:RA-PWREFUGEEPROGRAM@PA.GOV)

Website: [WWW.REFUGEESINPA.ORG](http://WWW.REFUGEESINPA.ORG)